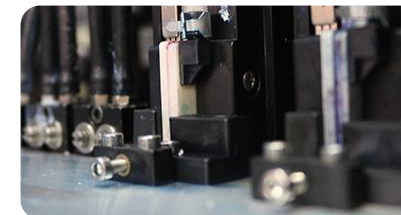
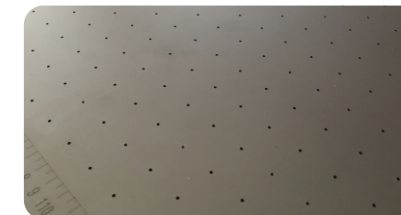


# FY-1216 series



Industrial printhead with long life span and high production.



Alloy aluminium honeycomb flatbed, flatness to lernace with in 250 micron 25kg per sqm.



LED water-cooling curing system, which is more convenient in use and better in curing, with longer service life, less energy consumption and more environmentally friendly.



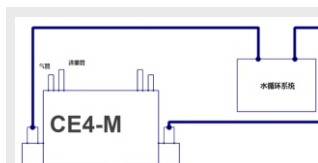
Big size main tank, white ink circulation system, and ink level detector with LED display.



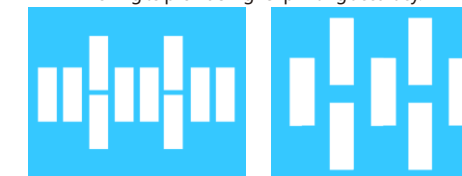
New generation of Crash-Sensor System can effectively protect print head from physical during the printing.



silent dual rail structure, featuring speed and silence, more stable during the operation process of carriage moving to provide higher printing accuracy.



The printer runs with Toshiba CE4M grayscale printhead, which features built-in circulation system for constant temperature printing, which reduces color difference and helps stable printing. Grayscale technology achieves smooth printing on gradient without losing speed.



CE4M

G5 / G6

## Technical Specifications

Model		FY-1216T	FY-1216R
Printhead		CE4M	G5/G6
Print width		L1200mm x W1600mm	
Print Speed *	4PASS	8.2m <sup>2</sup> /h	12m <sup>2</sup> /h
	6PASS	6.5m <sup>2</sup> /h	8.5m <sup>2</sup> /h
	8PASS	5.3m <sup>2</sup> /h	6m <sup>2</sup> /h

Weight & Thickness: 80KG & < 10CM

Type: wood, densiyboard, glass, metal, sheet, chevron board, PVC, Acrylic plate, ceramic tiles...

Ink: UV Curable Ink

Ink supply system: Negative pressure ink supply

Curing method: LED water-cooling curing

RIP: United Fancy

Movement of Y-Axis: Servo motor plus double leadscrew

Print Interface: USB 3.0

Printer: AC220V 50HZ 2.3A 500W

Print Platform Vacuum Hold Down Area: AC220V 50HZ 6.8A 1500W

Operation Environment: Temperature 16°C-30°C Humidity 40%-60%

Printer Dimensions: L3000mm x W2300mm x H1400mm 500kg

- 1、The speed data are taken from the printer at high speed, a difference of 10% may occur when running with different computers.
- 2、Product specifications are subject to change without notice in advance. Color and shape in picture are for reference, computer and monitor not included. All rights reserved!



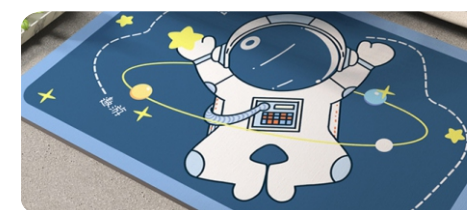
Advertising industry



Phone case



Cosmetics Items



Interior



Small batch customization



Cosmetics

# FY-1216 series

## 1.2M × 1.6M print width, UV Flatbed printer

## Compact in size with complete functions